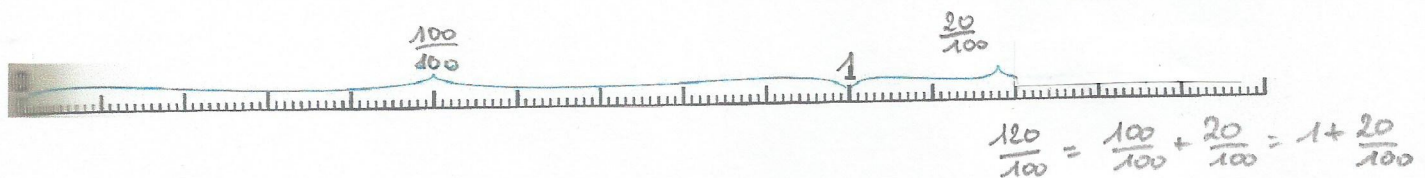
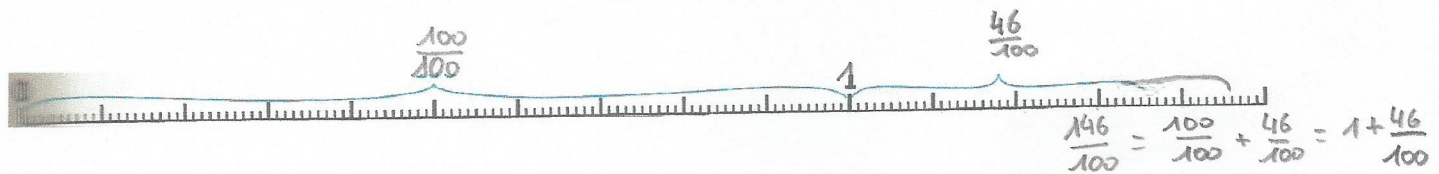
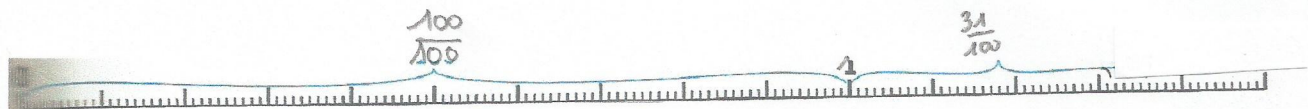
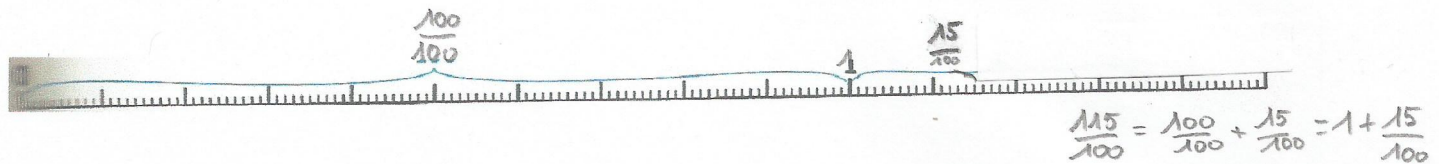
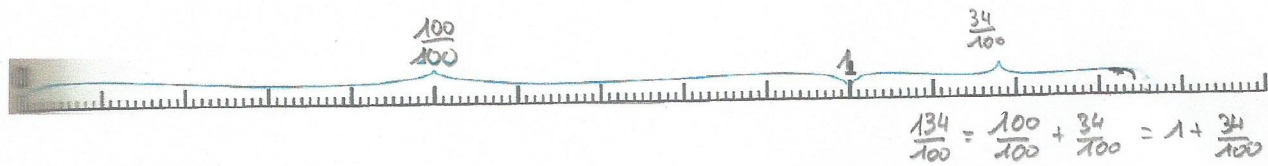
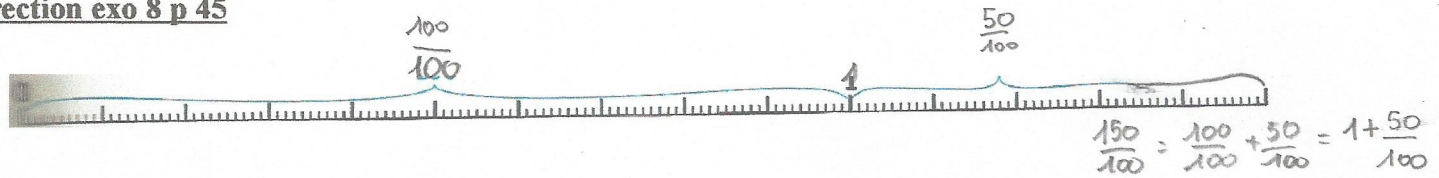
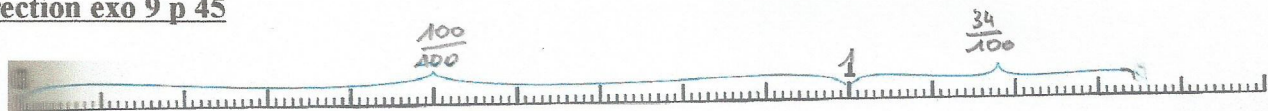


Correction exo 8 p 45



Correction exo 9 p 45



$$\frac{134}{100} = \frac{100}{100} + \frac{34}{100} = 1 + \frac{34}{100}$$

$$\frac{213}{100} = \underbrace{\frac{100}{100}}_{=1} + \underbrace{\frac{100}{100}}_{=1} + \frac{13}{100} = 2 + \frac{13}{100}$$

$$\frac{157}{100} = \frac{100}{100} + \frac{57}{100} = 1 + \frac{57}{100}$$

$$\frac{205}{100} = \frac{100}{100} + \frac{100}{100} + \frac{5}{100} = 2 + \frac{5}{100}$$

$$\frac{373}{100} = \frac{100}{100} + \frac{100}{100} + \frac{100}{100} + \frac{73}{100} = 3 + \frac{73}{100}$$

$$\frac{188}{100} = \frac{100}{100} + \frac{88}{100} = 1 + \frac{88}{100}$$